

PARKER JAMES

ESTATES

Established since 1995



## Java Wharf

16 Shad Thames London SE1 2YH

- Boat mooring
- Secure parking space
- Porter
- Quiet dockside position
- Close to bars and restaurants
- Freehold share
- Lift
- Roof terrace
- London Bridge station ten minutes walk away
- The Circle Gym and Spa five minutes walk away

Asking Price £399,950

# Java Wharf

16 Shad Thames London SE1 2YH



For sale with a share of the freehold and boat mooring rights is this extremely well presented third floor studio apartment with lift, porter, residents roof terrace and secure parking in this Grade II listed building in Shad Thames.

The newly carpeted 50 sqm property briefly comprises an entrance hall with built in storage cupboards, a fully fitted kitchen with integrated appliances and a breakfast bar with seating which is open plan to studio room with ample space for dining and a fully tiled bathroom.

Java Wharf is a clean well managed former warehouse development on the western bank of the river Neckinger, a tributary of the Thames, close to Tower Bridge and just ten minutes walk from London Bridge overground (Thameslink and Southeastern) and underground (Jubilee and Northern lines) stations.

A good choice of shops including a Co-op supermarket are a few minutes walk away as are bars and restaurants on Butlers Wharf where you can take in the stunning views of Tower Bridge and across the Thames to the City.



[Directions](#)

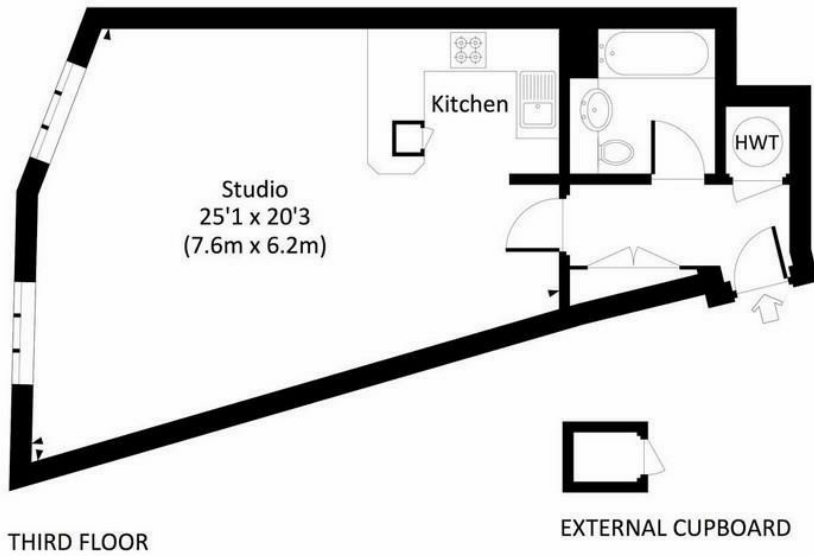




# Floor Plan

## JAVA WHARF, SHAD THAMES, SE1

Approx. gross internal area  
504 Sq Ft. / 46.8 Sq M.  
510 Sq Ft. / 47.4 Sq M. Inc. External Cupboard



These particulars, whilst believed to be accurate are set out as a general outline only for guidance and do not constitute any part of an offer or contract. Intending purchasers should not rely on them as statements of representation of fact, but must satisfy themselves by inspection or otherwise as to their accuracy. No person in this firm's employment has the authority to make or give any representation or warranty in respect of the property.

